

# Oil Level Regulator Assembly

332241A

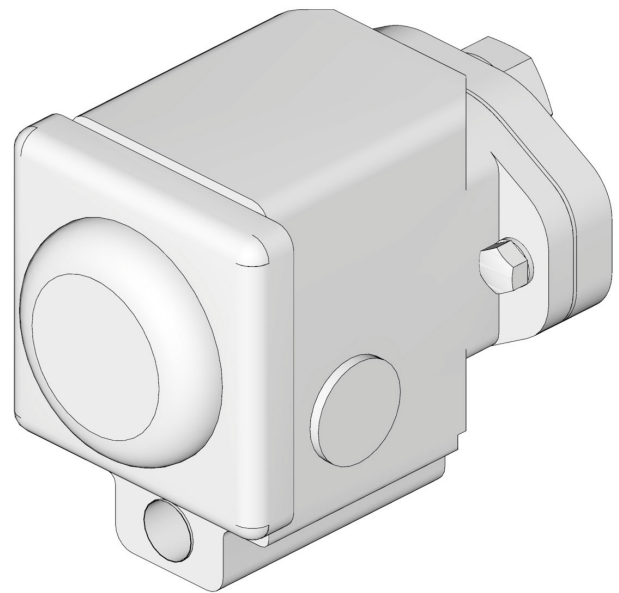
EN



## Important Safety Instructions

Read all warnings and instructions in this manual and in Modular Box Lubricator manual included with your unit. Save all instructions.

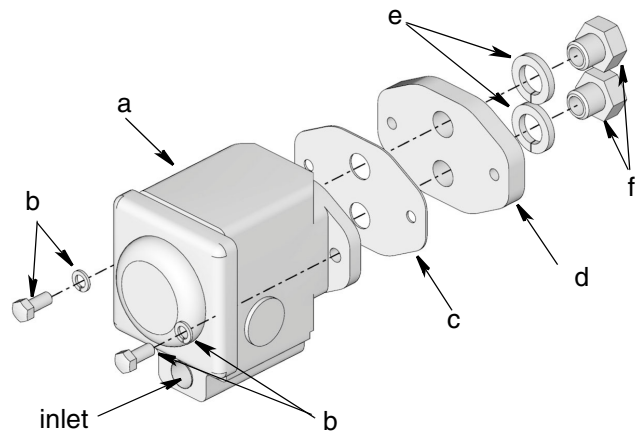
The Oil Level Regulator mounting flange is secured to the reservoir. The remaining components can be assembled to this flange.



Ref.	Description	Qty.
a	OIL LEVEL REGULATOR	1
b	ASSEMBLY SCREW SET	4
c	GASKET, mounting	1
d	FLANGE, mounting (already mounted to reservoir)	1
e	WASHERS, mounting (already mounted to reservoir)	2
f	ADAPTERS (already mounted to reservoir)	1

# Installation

1. Secure oil level regulator (a) and gasket (c) to mounting flange (d) with assembly screws (b).
2. Connect the regulator supply line, 1/2" (12.7 mm) ID minimum, from the reserve oil tank to the regulator inlet.



**FIG. 1**

## Graco Information

For the latest information about Graco products, visit [www.graco.com](http://www.graco.com).

**TO PLACE AN ORDER**, contact your Graco distributor or call to identify the nearest distributor.

**Phone:** 612-623-6928 or **Toll Free:** 1-800-533-9655, **Fax:** 612-378-3590

*All written and visual data contained in this document reflects the latest product information available at the time of publication.  
Graco reserves the right to make changes at any time without notice.*

*For patent information, see [www.graco.com/patents](http://www.graco.com/patents).*

Original instructions. This manual contains English. MM 332241

**Graco Headquarters:** Minneapolis  
**International Offices:** Belgium, China, Japan, Korea

**GRACO INC. AND SUBSIDIARIES • P.O. BOX 1441 • MINNEAPOLIS MN 55440-1441 • USA**

**Copyright 2012, Graco Inc. All Graco manufacturing locations are registered to ISO 9001.**

[www.graco.com](http://www.graco.com)  
December 2012