

Clean, Effective Lubrication Of Most Overhead Monorail And Power And Free Rivetless Power Chains

OP-4A is the most accurate conveyor chain pin lubricator on the market today.



- The OP-4A system lubricates chain pins while conveyor is running under normal conditions.
- Automatically deposits a clean, metered shot of oil directly and precisely to chain pins at desired intervals. No waste or mess from over oiling.
- Proper lubrication reduces friction and wear - extends conveyor life.
- Fast payback based on reduced maintenance and extended productive conveyor life.
- Eliminates surging caused by non-lubricated and worn chains, so product can be spaced closer, increasing productivity.
- Helps reduce drive power requirements.

Accurate, Reliable Operation

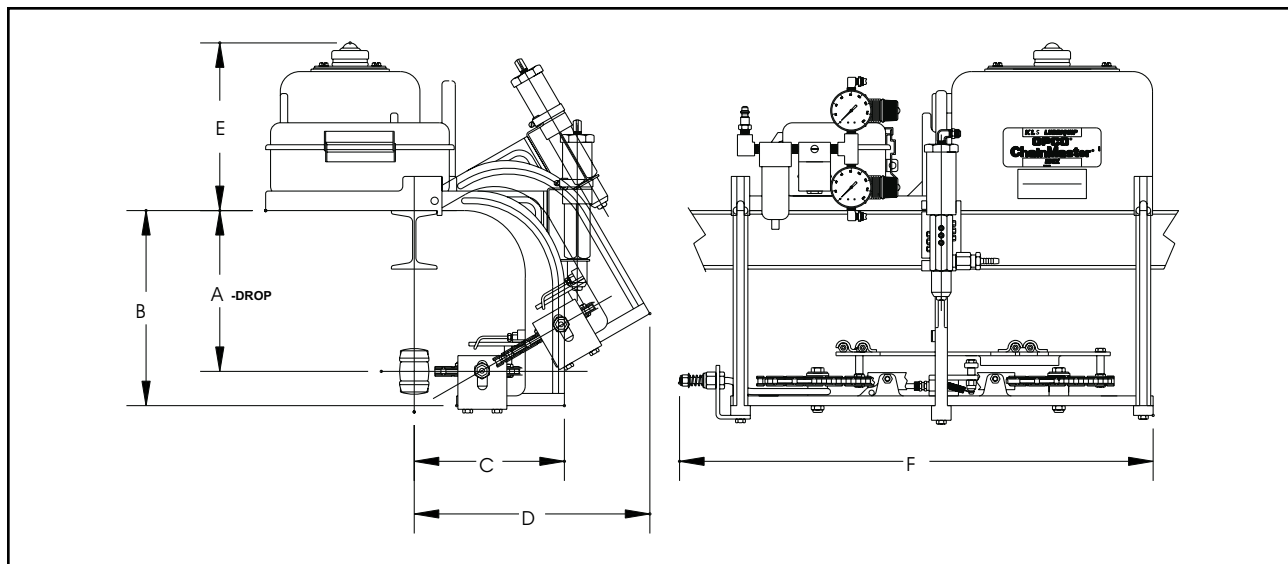
The OP-4A is pneumatically powered and electrically timed. A caterpillar chain assembly engages the conveyor chain, engaging the oil dispensing nozzle plate, moving it over the chain pin links. An air operated pump meters a precise amount of oil through each nozzle, lubricating chain pins and links simultaneously. The 1000-hour repeat cycle timer features cycle progress display and memory.

Optional Components

- Lubricant reservoir auto-fill device
- 12 hour manual on/automatic off timer.
- Manual on/off (no electric required).

OP-4 SPECIFICATIONS

Lubricant	32 – 220 cST@40°C (not to exceed 250 cST @ operating temperature), lubricants with solid additives must be colloidal < 5 microns viscosity improvers and stickslip additives degrade “shot” performance and must be approved by OPCO prior to use.
Shot Volume	0.0045 in ³ (0.074 cm ³) per output line
Lubricant Lines	1/8 in O.D. Nylon
Air Requirements	80 psi (min), 1/4 in NPT inlet pipe size
Reservoir Capacity	1.7 gallons (6.4 liters)
Ambient Temperature	40°F to 120°F (5°C to 45°C)
Input Power	115 VAC, 50/60Hz standard, 1.5 amp: 220 VAC, 50/60Hz optional: 0.8 amp
Material Compatibility	Nonmetallic parts exposed to the lubricant: Buna-N, Nylon, Delrin, Neoprene, Butyrate, & Viton; Nonmetallic parts exposed to ambient: Poly carbonate, Neoprene, Nylon, & Thermoplastic
Outline Dimensions	See Chart below



Chain Pitch in (mm)	A in (mm)	B in (mm)	C in (mm)	D in (mm)	Reservoir Size	E in (mm)	Chain Pitch in	F in (mm)
3 (76)	5.5 (140)	7.75 (197)	8.62 (219)	9.06 (230)	1.7 gal	9 (229)	2 & 4	25 (635)
4 (102)	7.18 (182)	9.31 (236)	8.58 (218)	11.1 (282)	5 gal	13 (330)	3 & 6	28 (711)
4 (102)	8 (203)	10.19 (256)	8.58 (218)	11.6 (265)	—	—	—	—
6 (152)	7.44 (189)	10.19 (256)	8.91 (226)	12.8 (325)	—	—	—	—
6 (152)	10 (254)	12.12 (308)	8.91 (226)	13.25 (337)	—	—	—	—